

IHL Productivity Challenge 2017



Figure 1: Team Plus from School of Design and Environment (SDE), National University of Singapore (NUS)

One of the events at the Singapore Construction Productivity Week (SCPW) 2017 was the IHL Productivity Challenge. The project-based competition required participants to propose buildable systems and construction methods which at the very minimum satisfied the Buildable Design and Constructability scores that were set out. Participants were also expected to provide a construction schedule, sequence of work, project cost estimation and Building Information Modelling or BIM model.

With advice from Professor Low Sui Pheng, Team Plus, a group consisting of five Project and Facilities Management (PFM) undergraduates from NUS - Irwin Hafiz Bin Hairy, Tan Kai Yi, Fung Chun Chang, Goh Yan Jie and Phan Do Phuong Uyen - was awarded the 3rd prize of \$2,000 cash vouchers. Their proposal for a 2-tower residential project included the use of Prefabricated Prefinished Volumetric Construction (PPVC), Integrated Project Delivery (IPD) and cloud-based monitoring systems. For simulations and estimations, the group produced deliverables that were generated using software like Revit, Navisworks Manage and CostX.

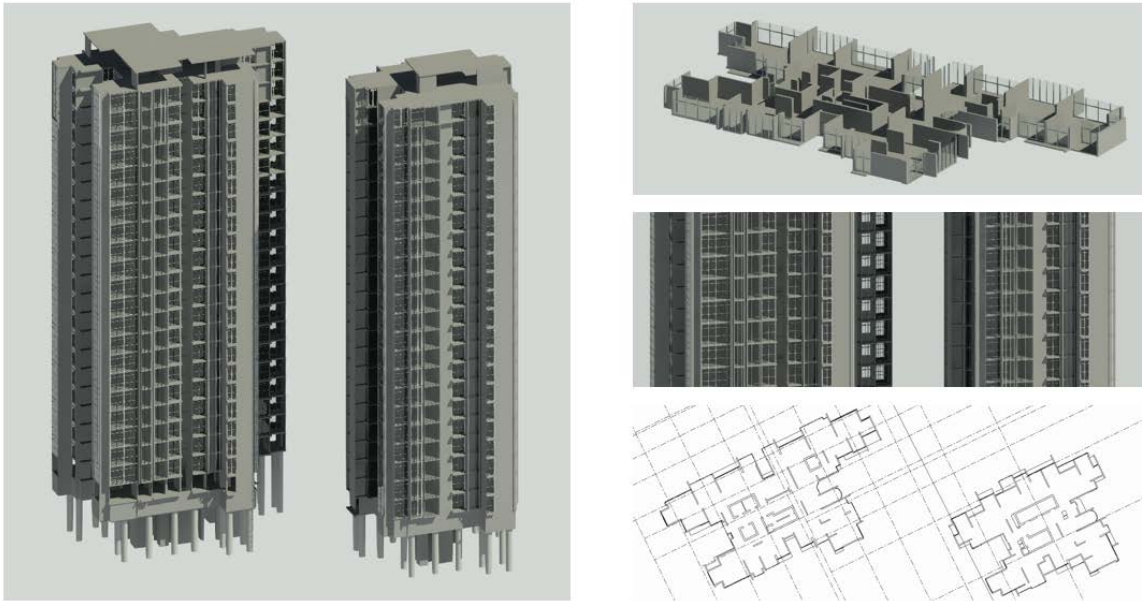


Figure 2: Screenshots of the team's BIM model